



YUTONG E12/E10

Technology-
Empowered Green Transport





WHO WE ARE

The world's largest bus and coach supplier,
global top-selling bus brand

- 4 manufacturing bases
- Total plant area > 3.59 million m²
- Max. daily production capacity>445 units
- Max. daily production capacity of new energy bus > 375 units
- Full product range from 5m-18m including city buses, coaches, commuter vehicles, school buses, special vehicles, etc.
- Over 130,000 new energy buses sold to date, operating in over 300 cities worldwide

OUR MISSION

To create greater value for our customers

- Save 58,919L fuel per year
- Reduce 9,290 T NO (nitric oxide) emissions per year
- Reduce over 1,600,000 T carbon emissions per year
- Reduce 193 T PM2.5 emissions per year

TECHNOLOGY-EMPOWERED GREEN TRANSPORT

Following Yutong's forward-looking and innovative philosophy, the Yutong full electric bus sets new standards for environmental friendly zero emission bus transport.



CONTEMPORARY MODERN DESIGN TO FIT ANY URBAN ENVIRONMENT

The stylish appearance and design with the simple streamlined body shape combines both urban style and industrial design flair to form an elegant vehicle for any city or town.



INNOVATION CHANGES DRIVING

The Yutong new energy bus uses advanced technology to increase driver control and improve safety and vehicle performance.

Follow-up instrument

User-friendly interface and floating buttons.



SOPHISTICATED SAFETY TECHNOLOGY

Yutong has designed and patented the core technology of the ReCtrl unit which is unique to Yutong and at the heart of the new electric buses. Through experience, Yutong has fully evaluated the “3S⁺” safety standards for electric buses; namely “fire-proof, water-proof and electric shock-proof”. This has raised its safety protection level to the highest standard of **IP68 + IP6K9K** and meets all current European standards.

YUTONG RECTRL AND 3S⁺ SAFETY STANDARDS



Fire-proof, water-proof and electric shock-proof

Improves the safety of buses while running in dusty areas or wading through standing water (≤ 0.3 m).



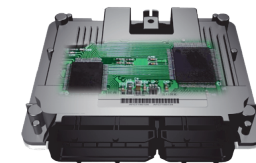
Battery with liquid cooling system

All batteries go through a series of stringent performance tests and verifications, as well as 24-hour safety monitoring, to ensure the battery cannot catch fire or explode.



Integrated motor controller

With integrated design adopted, high-voltage node and volume are reduced by 59%, making the bus safer and more reliable.



Vehicle controller

With bus status monitoring in real time, energy management and brake energy optimization, the new energy bus is designed for a service life of up to 15 years.

SMART AUXILIARY DRIVING ENSURES SAFE OPERATION

Innovative auxiliary technology is adopted for carefree driving and better life in cities.

Brake Hold System

The hand brake operates automatically when the bus stops meaning driver handbrake operation is reduced by 80% and air compressor use is reduced by about 20%.

EASY ACCESS FOR REPAIR AND MAINTENANCE

All parts and components are carefully designed for better and easier maintenance and repair.



FAST AND SAFE CHARGING WITH INNOVATIVE TECHNOLOGIES

Learning from many years of electric bus experience, Yutong has made significant progress in developing charging technology for electric buses. Operators can be confident that Yutong will provide a charging solution to match the requirements of their specific location and vehicle mix.

Euro-standard DC charging system

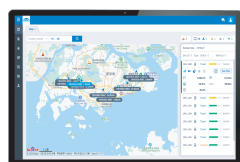
200A (European-standard) Real-time monitoring of the charging current and the temperature of the charging socket gives a very high level of protection as standard.

Euro-standard



INTELLIGENT CONNECTED TECHNOLOGY

Yutong new energy buses integrate modern communication and network technologies to create close information communication among buses, users, operators, road conditions and backstage monitoring platform. With the technology, the management efficiency of operators is improved, the operating cost is reduced and eventually intelligent travel is enabled.



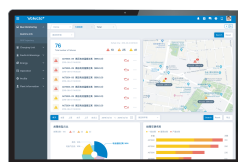
Real-time data monitoring

Real-time viewing of vehicle operation, energy consumption and fault finding information allows better management of resources, safety and fleet utilization.



Energy consumption management

The real-time energy consumption levels can be seen remotely by management allowing the optimization of energy use through big data analysis.



Remote fault diagnosis

Faulty components and service issues can be identified remotely allowing faster remedial action to ensure the bus can return to normal operation quicker.



Business operation report

Big data analysis helps optimize daily/weekly/monthly fleet operation in terms of mileage, energy consumption and operating time.



Power battery analysis report

Continual monitoring of the status of the power batteries provides valuable information on driver behavior, charging and helps to maximise battery life.



Driving behavior analysis

Technology allows individual drivers to be accessed from the perspective of safety, energy consumption and comfort and gives management a clear view of driver performance.

Vehicle Painting Style Design



Specification

Model	E12	E10
Overall length* width* height (mm)	12170*2550*3350	10900*2550*3285
Interior height(mm)	2468	2468
Min. turning diameter (m)	20.5	18
Approach/departure angle (°)	7/7	7/8.5
Max. grade ability (%)	17	18
Battery type	LFP	LFP
Energy storage system(kWh)	422.87, liquid cooling	422.87, liquid cooling

This document is for reference only and the product is subject to change. Yutong reserves the right of final interpretation.



Zhengzhou Yutong Bus Co., Ltd.

Yutong Industrial Park, Yutong Road, Guancheng District, Zhengzhou, China (PC: 450061) Tel: +86 371 6671 8999

Website: www.yutong.com E-mail: sales@yutong.com

Follow us on Facebook & Twitter & YouTube at Yutong Bus & Coach

The images may include items of optional equipment and accessories that are not installed as standard. The product is subject to technical improvement.

Yutong reserves the right to change product specifications without prior notice. All rights reserved. August, 2020 Edition.