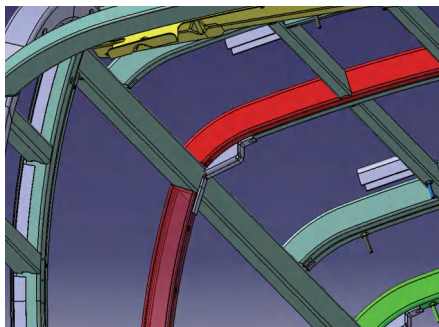
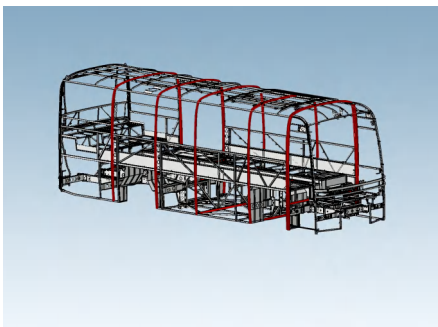
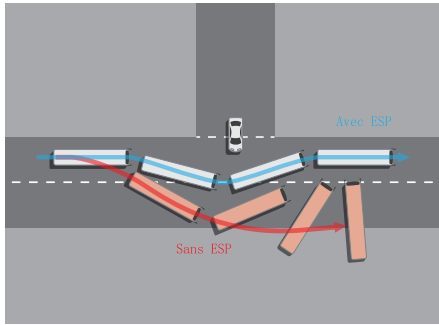


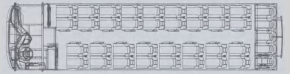
SAFE, RELIABLE AND WORRY-FREE OPERATION

Time testifies to quality, safety earns trust. Yutong ZK6907H is developed based on a customer-focused perspective to ensure reliability, durability, and stable operation throughout its lifecycle.



- **Y.E.S cathodic electrocoating**
Vehicle structural parts are designed for over 10 years of corrosion protection, ensuring reliability and long-lasting performance.
- **Firefighting harness**
The vehicle's wires are tin-plated copper, ensuring safety, durability, and high flame resistance, significantly reducing fire risk.
- **Robust closed-ring high-strength body structure**
Featuring Yutong's unique robust closed-ring structure, the vehicle offers enhanced safety. In a collision, the body structure minimizes deformation, effectively protecting both drivers and passengers. Professional CAE analysis is conducted to strengthen the vehicle body.
- **Reinforced box part**
The roof cover frame and side wall frame feature newly reinforced box parts, enhancing shear resistance by 50% and significantly reducing deformation during rollovers or roof impacts.



C9		
ITEM	PARAMETERS	OPTIONAL
L*W*H (mm)	8,970*2,550*3,450	
Engine	Cummins C230-20	YCK08280-30
Displacement (L)	8.3	
Emission	Euro II	Euro III
Transmission	Fast 6DS-130	
Clutch	Sachs push-type clutch	
Front axle	YUTONG, disc-type, 4.5T	
Rear axle	YUTONG, disc-type, 9T	
Brake system	KNORR ABS	
Tire	10R22.5	
Suspension system	Leaf spring suspension	Airbag suspension
A/C	Cling (24,000 kcal/h)	
Tank capacity (L)	260	460
Seats	39+1+1	35+1+1 (with the middle door)
Seat layout	 39+1+1	



YUTONG BUS CO., LTD.
Yutong Marketing Center, Economic and Technological Development Zone, Zhengzhou, China
Tel: +86 371 6671 8999 Website: www.yutong.com E-mail: sales@yutong.com
Follow us on Facebook & Twitter & YouTube at YUTONG Bus & Coach
The images may include items of optional equipment and accessories that are not installed as standard.
The product is subject to technical improvement. YUTONG reserves the right to change product specifications without prior notice. All rights reserved. March, 2025 Edition.



C9 | ALL NEW 7 SERIES
DREAM COACH



COMFORTABLE DRIVE AND RIDE, UNMATCHED EASE AND PLEASURE

C9 attaches great importance to user experience, leveraging advanced technology to deliver a comfortable and enjoyable ride. Combining the stability of a larger vehicle with the agility of a smaller one, it ensures a smooth and pleasant journey.



- **Multi-function steering wheel**
Compact design with small diameter and 10 function keys, reducing driver effort and enhancing control.
- **Ergonomic dashboard**
Optimized HMI and electrical button placement for intuitive operation and seamless interaction.
- **Integrated center console**
Sedan-like design integrating audio/video playback, reverse camera, Bluetooth calling, and smartphone connectivity to embody cutting-edge automotive technology.
- **Sedan-style short gearshift**
Mounted on dashboard for precise control, freeing up space and improving accessibility.



OPERATIONAL ADVANTAGES FOR EASY VALUE CREATION

With years of expertise in bus manufacturing and accurate insight into customers' operational demands, Yutong has continuously optimized ZK6907H in key operational dimensions such as economy and convenience, creating more value for customers.

Energy saving and consumption reduction, highlighting competitiveness

Through technological innovation, the fuel consumption of vehicles is significantly reduced and customer value is comprehensively enhanced.

- **Bluecore intelligent fuel-saving system**
Reduced fuel consumption (compared with one having no fuel-saving systems)
- **Electronic fan cooling system**
The Gen II thermal management system with electronic fans greatly reduces fuel consumption compared to traditional electromagnetic fans.

Innovative design for convenient maintenance

- **Integrated maintenance-free wheel end for front and rear axles**
Maintenance-free for 800,000 km, reducing maintenance frequency.
- **Rotary electrical box**
Convenient and quick inspection and maintenance of electrical parts.
- **Pull-out maintenance-free battery**
Allows for easy removal of the entire battery.
- **Flippable front wall structure**
Service-friendly design ensures easy access to routine maintenance parts and consumables, streamlining repair operations.

Ample luggage compartment for enhanced convenience

4.0 m³ through-type luggage compartment for enhanced luggage capacity and travel experience (Note: Actual volume may vary by configuration.)